



Oil & Gas, Marine, Mining & Industrial Engineering - Fabrication – Construction

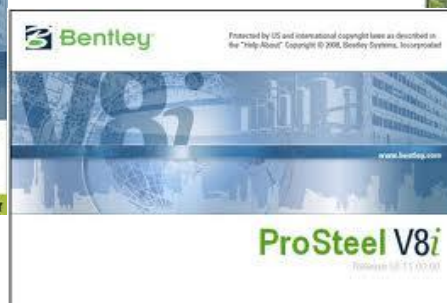
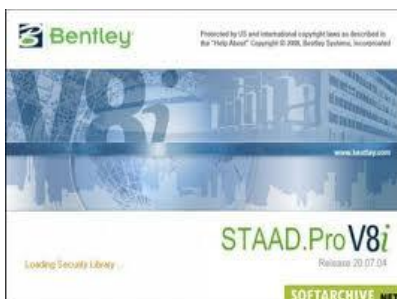
DETAIL DRAWING SERVICES

Beside on our main scope on EPC (Engineering Procurement and Construction), we also provide your requirement on Detailed Drawing to easier your fabrication and installation process.

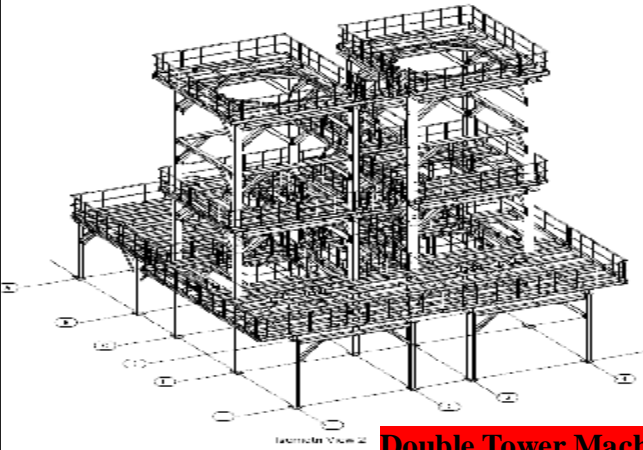
FAST DETAILED MONITORING

OUR FACILITY TO SATISFY YOUR REQUIREMENT :

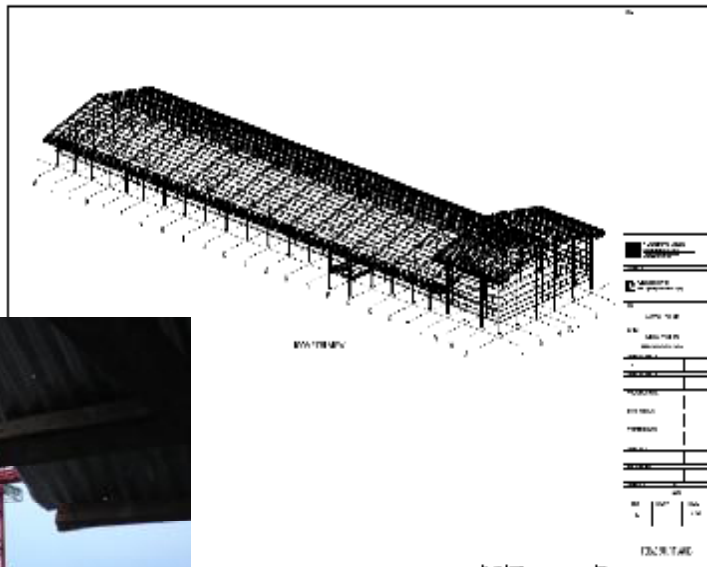
1. Skilled drafter is 20 person
to full fill your requirement capacity regarding with detailed drawing
2. Software : Tekla Structure, Staad pro v8i, Pro Steel v8i, Ram connection v8i, and Auto cad also flexible, depend on type of costumer's software used.
3. Data base of AUSTRALIAN, AMERICAN, AND JAPANESE, etc of profile section material
to speed up drawing process base on costumer requirement



PREVIOUS PROJECT



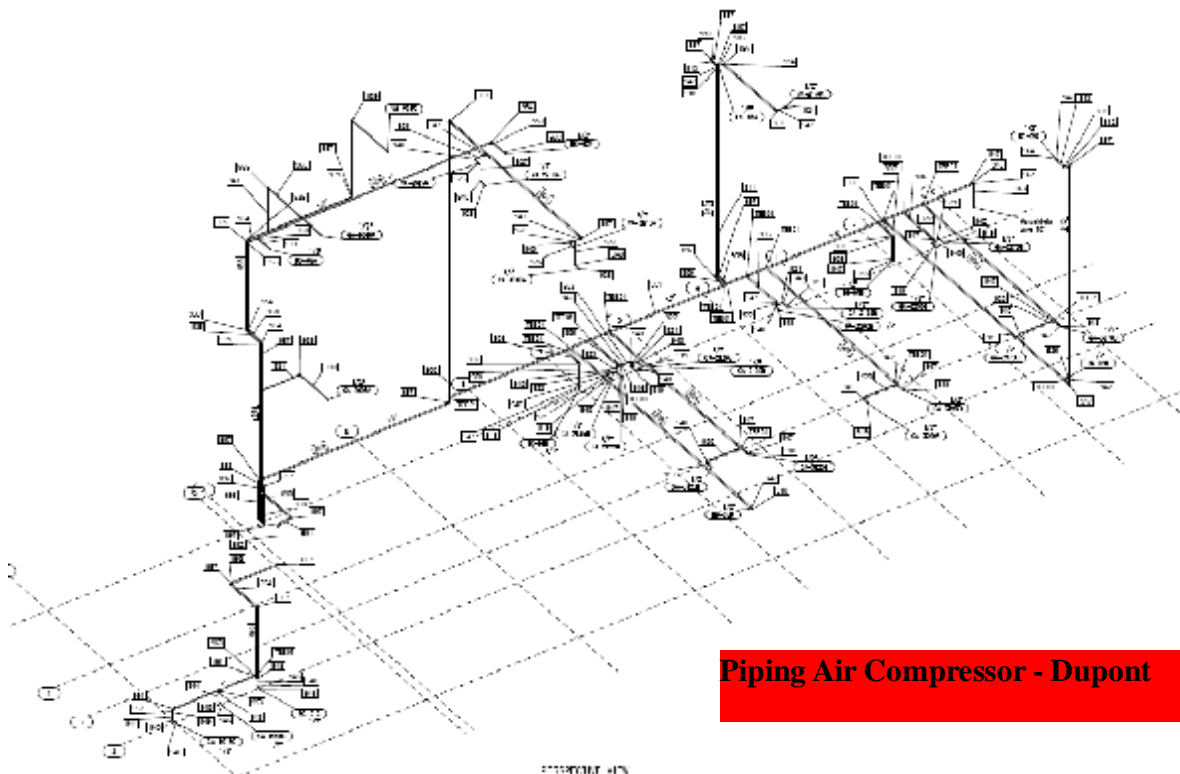
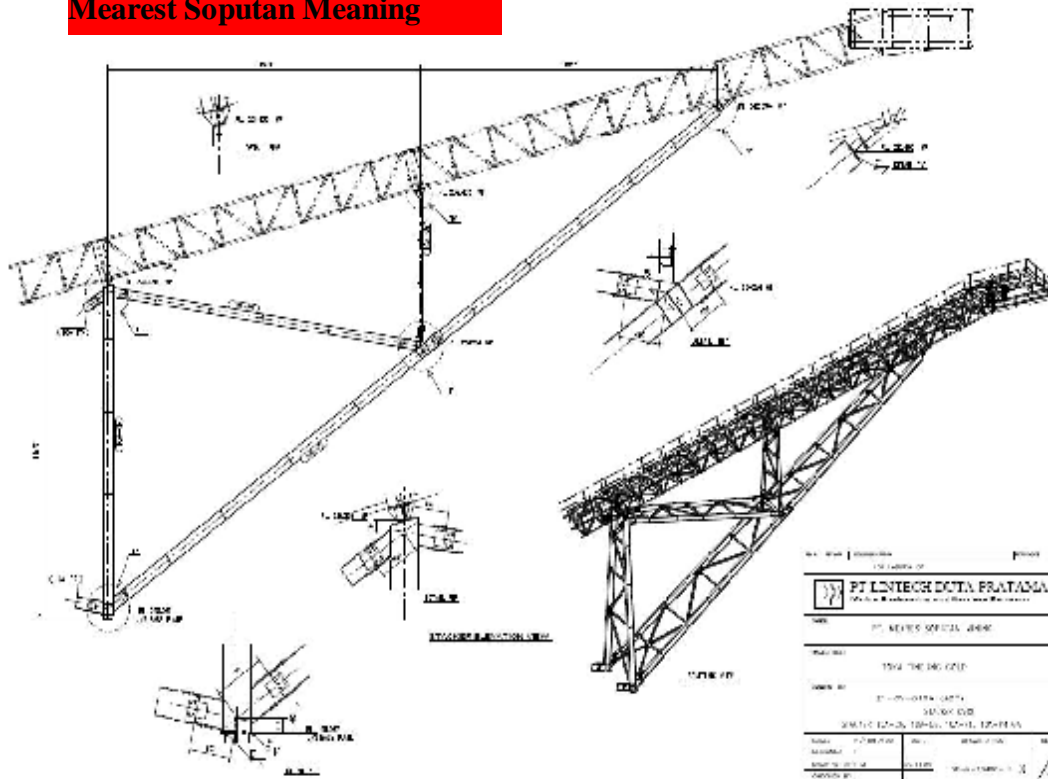
Double Tower Machine – Rickerman Ind



Ware House – Dupon

Oil & Gas, Marine, Mining & Industrial Engineering - Fabrication – Construction

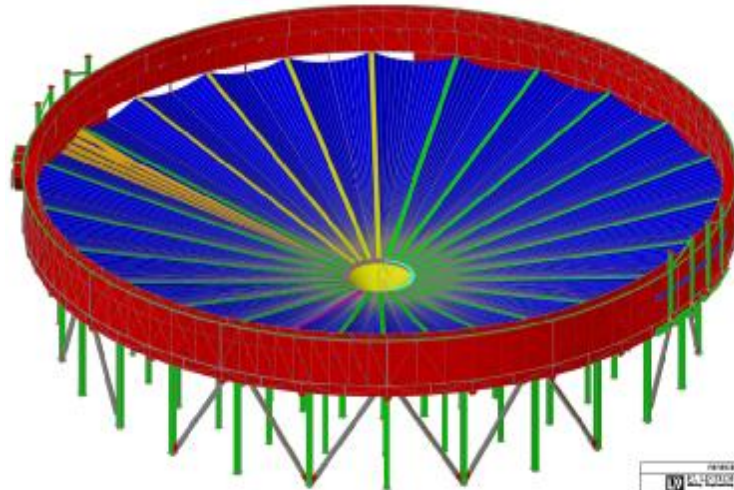
**Conveyor Frame Structure –
Mearest Soputan Meaning**



Piping Air Compressor - Dupont



Oil & Gas, Marine, Mining & Industrial Engineering - Fabrication – Construction



PROJEKT	
OBJEKT	FLSMIDTH
NOVUM	1000000000
PROJEKTANT	1000000000

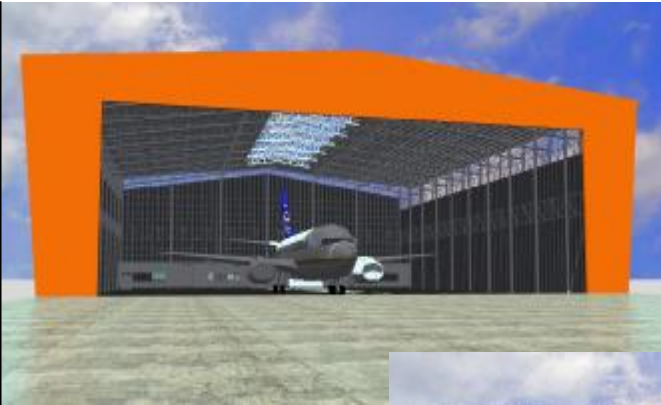
© 2014 LINTECH. ALL RIGHTS RESERVED. LINTECH IS A REGISTERED TRADEMARK OF LINTECH. LINTECH IS A REGISTERED TRADEMARK OF LINTECH.



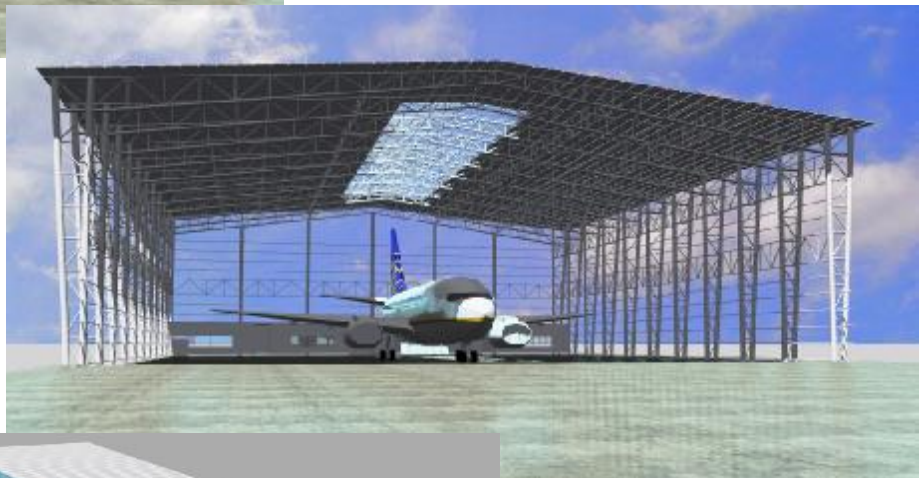
40 M Thailings Thickener - FLSMidth



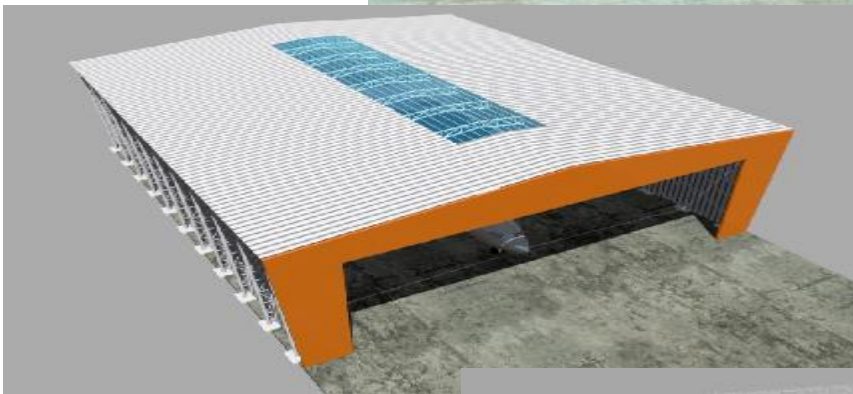
**Air Craft Hangar
66 Meter Span**



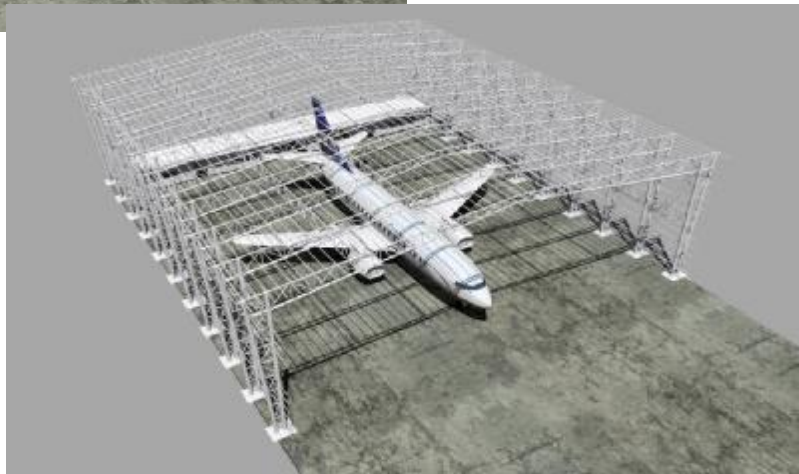
**Air Craft Hangar
66 Meter Span**



**Air Craft Hangar
66 Meter Span**

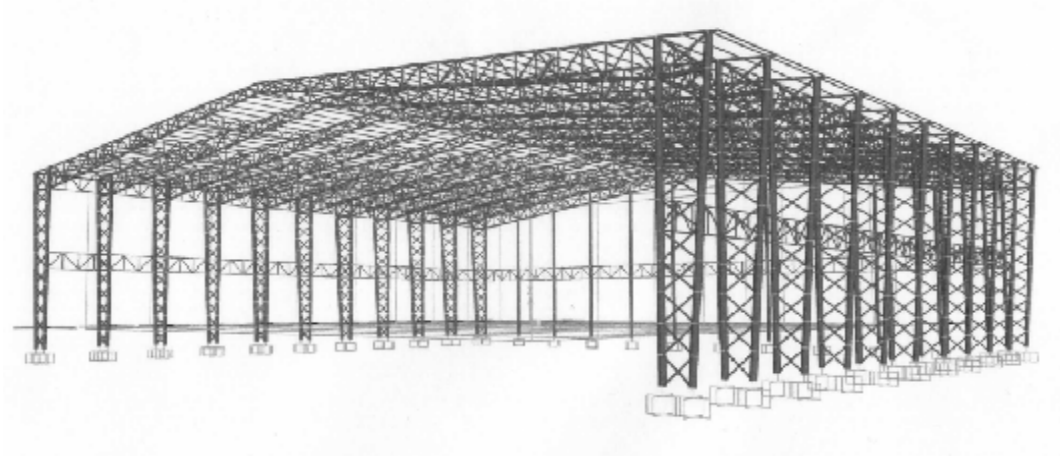


**Air Craft Hangar
66 Meter Span**





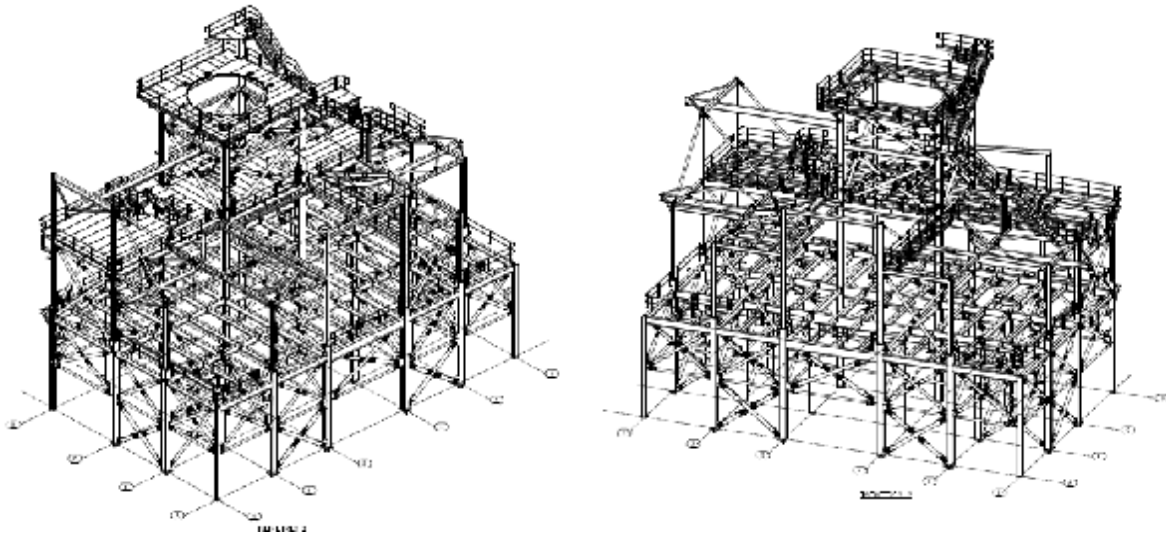
Oil & Gas, Marine, Mining & Industrial Engineering - Fabrication – Construction



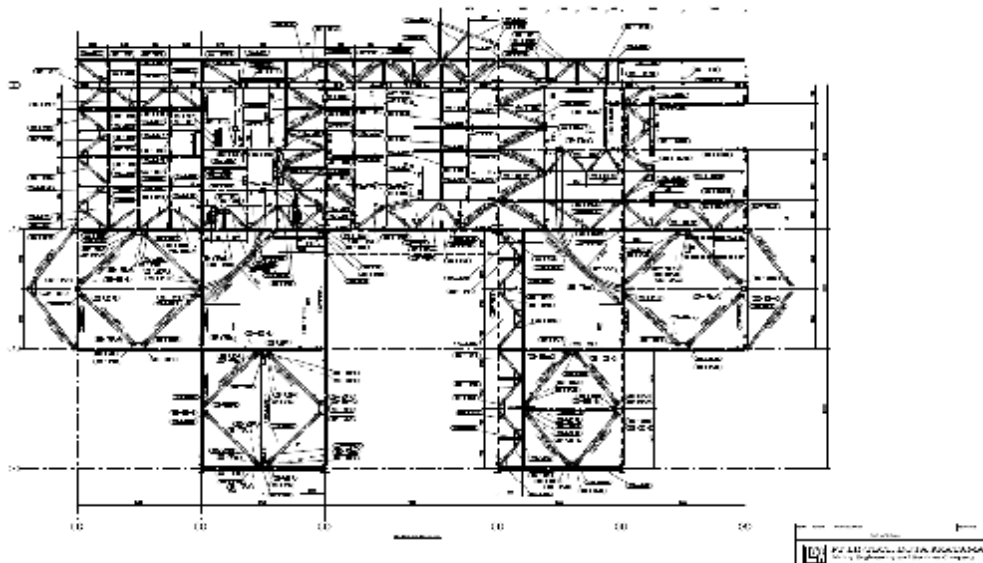
ON GOING PROJECT

Steel Structure Martabe Project – AUSENCO
Scope of Work : Supply, fabrication and delivery
Tonage : +/- 1500 Ton

Arrangement drawing of Grinding Area






Marking Number





Oil & Gas, Marine, Mining & Industrial Engineering - Fabrication – Construction

Controlled progress sheet document

  	1929 – 0100 MARTABE PROJECT Document Transmittal	Sheet 1 of 3
		Revision 0

Transmittal No : 1929-0100-LDP-TR-030	Date : 10 May, 2011
Job No : 1929 – Martabe Project	
Enq. No : 0100	

To : PT. Agincourt Resource	Send:
Attn : Martabe Document Control	FTP
144 Montague Road South Brisbane QLD 4101	Subject :
From : Moch.Nurhadi	VDDR

No	VDDR Req.No	Doc/Dwg. No.	TITLE	Rev	QTY (pages)	Action Status *Info /Action/Review/ Approval
1	5.05	LDP-1929-220-2-G1	PLAN VIEW EL.+0 ALONG GRIDLINE A TO M	0	1	Approval
2	5.05	LDP-1929-220-2-G2	PLAN VIEW EL.+0 ALONG GRIDLINE M TO AA	0	1	Approval
3	5.05	LDP-1929-220-2-G3	PLAN VIEW EL.+2718	0	1	Approval
4	5.05	LDP-1929-220-2-G4	PLAN VIEW EL.+5321	0	1	Approval
5	5.05	LDP-1929-220-2-G5	PLAN VIEW EL.+6518	0	1	Approval
6	5.05	LDP-1929-220-2-G6	PLAN VIEW EL.+7918 ALONG GRIDLINE A TO K	0	1	Approval
7	5.05	LDP-1929-220-2-G7	PLAN VIEW EL.+7918 ALONG GRIDLINE K TO AA	0	1	Approval
8	5.05	LDP-1929-220-2-G8	PLAN VIEW EL.+9700	0	1	Approval
9	5.05	LDP-1929-220-2-G9	PLAN VIEW EL.+16418	0	1	Approval
10	5.05	LDP-1929-220-2-G10	GRIDLINE A	0	1	Approval
11	5.05	LDP-1929-220-2-G11	GRIDLINE D	0	1	Approval
12	5.05	LDP-1929-220-2-G12	GRIDLINE F	0	1	Approval
13	5.05	LDP-1929-220-2-G13	GRIDLINE I	0	1	Approval
14	5.05	LDP-1929-220-2-G14	GRIDLINE J	0	1	Approval
15	5.05	LDP-1929-220-2-G15	GRIDLINE K	0	1	Approval
16	5.05	LDP-1929-220-2-G16	GRIDLINE E	0	1	Approval
17	5.05	LDP-1929-220-2-G17	GRIDLINE L	0	1	Approval
18	5.05	LDP-1929-220-2-G18	GRIDLINE M	0	1	Approval
19	5.05	LDP-1929-220-2-G19	GRIDLINE O	0	1	Approval
20	5.05	LDP-1929-220-2-G20	GRIDLINE P	0	1	Approval
21	5.05	LDP-1929-220-2-G21	GRIDLINE Q	0	1	Approval
22	5.05	LDP-1929-220-2-G22	GRIDLINE S	0	1	Approval
23	5.05	LDP-1929-220-2-G23	GRIDLINE T	0	1	Approval
24	5.05	LDP-1929-220-2-G24	GRIDLINE U & V	0	1	Approval
25	5.05	LDP-1929-220-2-G25	GRIDLINE W	0	1	Approval
26	5.05	LDP-1929-220-2-G26	GRIDLINE Y	0	1	Approval
27	5.05	LDP-1929-220-2-G27	GRIDLINE Z	0	1	Approval
28	5.05	LDP-1929-220-2-G28	GRIDLINE AA	0	1	Approval
29	5.05	LDP-1929-220-2-G29	GRIDLINE 2	0	1	Approval
30	5.05	LDP-1929-220-2-G30	GRIDLINE 3 & 4	0	1	Approval
31	5.05	LDP-1929-220-2-G31	GRIDLINE 5 & 6	0	1	Approval
32	5.05	LDP-1929-220-2-G32	GRIDLINE 7	0	1	Approval



Oil & Gas, Marine, Mining & Industrial Engineering - Fabrication – Construction

For inquiry and further information, please contact us at :



PT. LINTECH DUTA PRATAMA

*"We Offer Integrated Engineering, Procurement, Construction (EPC) and
Fabrication (ONSHORE & SEASIDE facilities) for Industry, Mining and Oil & Gas"*

Office/Workshop: Graha Lintech – Wira Jatim Industrial Estate – Mastrip70 – Surabaya- Indonesia

Seaside Facility: Daendels Street - Paciran Cape Lamongan - 60km from Surabaya - Indonesia

Phone: +62-31-7666891 (Hunting 6 lines) Fax: +62-31-7664604

E-MAIL : admin@lintech.co.id HOMEPAGE: <http://www.Lintech.co.id> ; <http://www.LSF.CO.ID>